



GAT MONTHLY MEMBERSHIP PROGRESS REPORT

Results as of: 3/31/2023

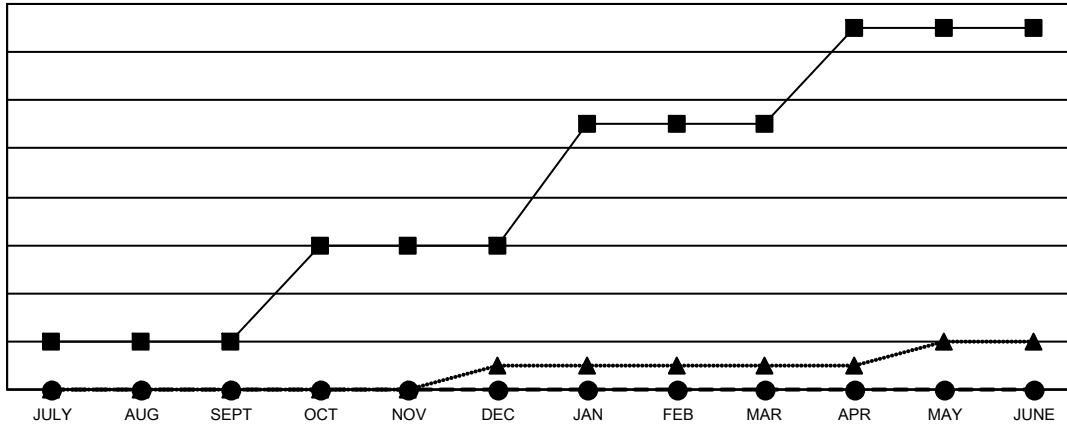
Multiple District 1

LOCATION: ILLINOIS

Clubs			
RESULTS FOR 2022-2023			
QUARTER	NEW CLUB GOAL	NEW CLUBS	DROPPED CLUBS
JULY/AUG/SEPT	2	0	4
OCT/NOV/DEC	4	0	2
JAN/FEB/MAR	5	0	0
APR/MAY/JUNE	4	0	0

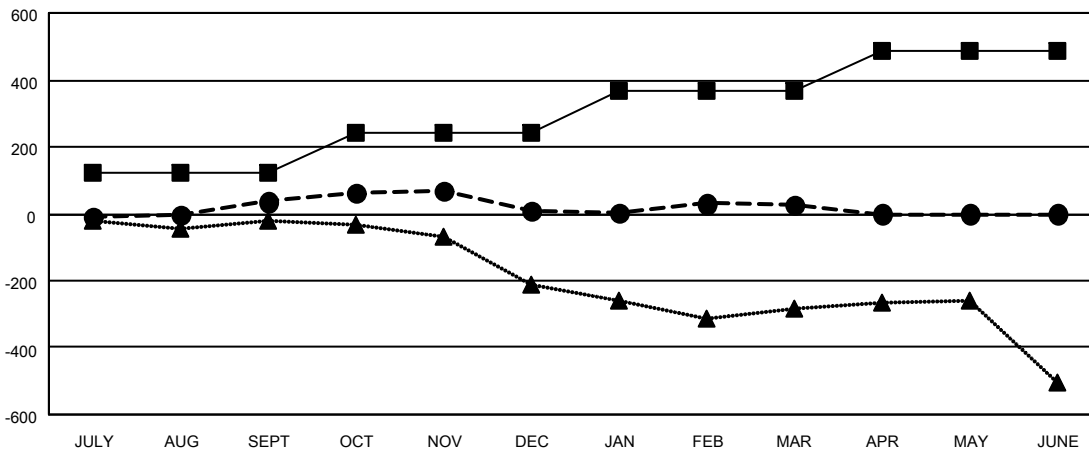
Members			
RESULTS FOR 2022-2023			
QUARTER	MEMBER GROWTH NET GOAL	MEMBER GROWTH ACTUAL	DROPPED MEMBERS ACTUAL (including transfers)
JULY/AUG/SEPT	122	376	299
OCT/NOV/DEC	122	324	320
JAN/FEB/MAR	121	297	236
APR/MAY/JUNE	124	0	0

GOALS AND ACTUAL NEW CLUBS CUMULATIVE



- CURRENT YEAR GOALS FOR NEW CLUBS
- CURRENT YEAR ACTUAL NEW CLUBS
- ▲- LAST YEAR ACTUAL NEW CLUBS

GOALS AND ACTUAL MEMBERS CUMULATIVE



- MEMBER GROWTH NET GOAL
- MEMBER GROWTH ACTUAL
- ▲- LAST YEAR MEMBERSHIP ACTUAL

DROPPED CLUBS: 6	230 CLUBS OF 449 ADDED 1 OR MORE NEW MEMBERS	GENDER DISTRIBUTION
DROPPED MEMBERS	CLICK HERE FOR CUMULATIVE MEMBERSHIP DATA	MALE 8,813 (71.34%)
DECEASED 148		FEMALE 3,538 (28.64%)
CLUB CANCELLED 34		NON BINARY 0 (0.00%)
OTHER 673		PREFER NOT TO ANSWER 3 (0.02%)
TOTAL 855		TOTAL FAMILY UNIT MEMBERS 1,783
		FAMILY MEMBERS PAYING HALF DUES 920